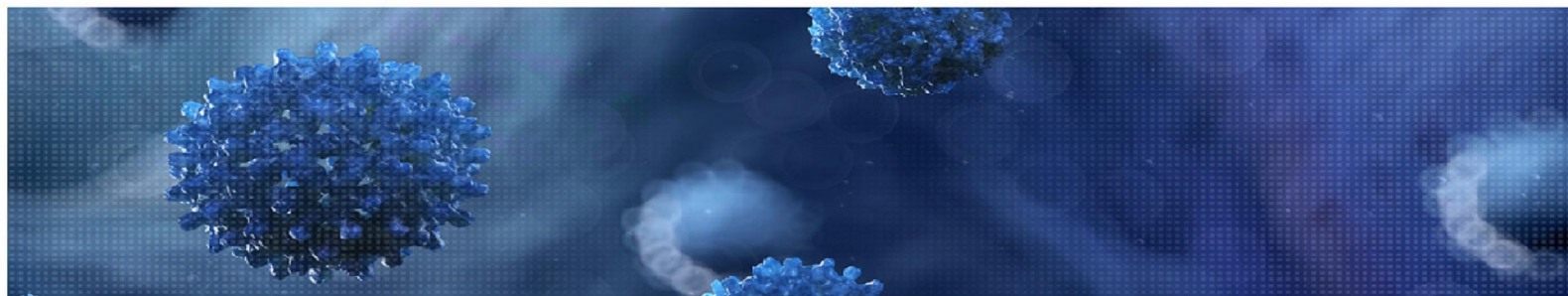


---

Erasmus MC



**Viroscience lab**  
WHERE SKILLS MEET TO STUDY & PROTECT



SARS-CoV-2 varianten in internationale context

---

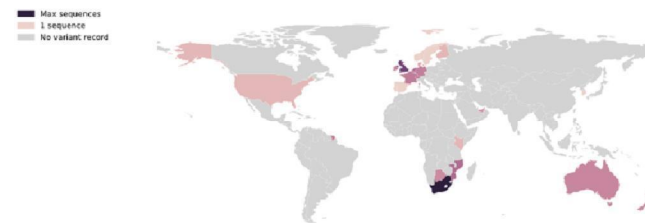
## 20H/501Y.V2 of B.1.351 lineage (ZA variant)

| Country        | Total #GH/501Y.V2 (B.1.351) | #GH/501Y.V2 (B.1.351) in past 4 weeks | %GH/501Y.V2 (B.1.351) in past 4 weeks |
|----------------|-----------------------------|---------------------------------------|---------------------------------------|
| South Africa   | 490                         | 6                                     | 100.0                                 |
| United Kingdom | 74                          | 30                                    | 0.2                                   |
| Netherlands    | 22                          | 16                                    | 2.1                                   |
| Mayotte        | 21                          | 21                                    | 18.1                                  |
| Mozambique     | 19                          | 10                                    | 02.5                                  |
| France         | 16                          | 8                                     | 2.2                                   |
| Belgium        | 12                          | 8                                     | 1.8                                   |
| Switzerland    | 11                          | 6                                     | 0.5                                   |
| Germany        | 8                           | 3                                     | 1.0                                   |
| Botswana       | 7                           | 1                                     | 100.0                                 |

<https://www.gisaid.org/hcov19-variants/>

Figure 3 | Map of B.1.351 sequence counts

Map showing the logged number of sequences of the variant in each country. Countries with more sequences are shown in darker colours.

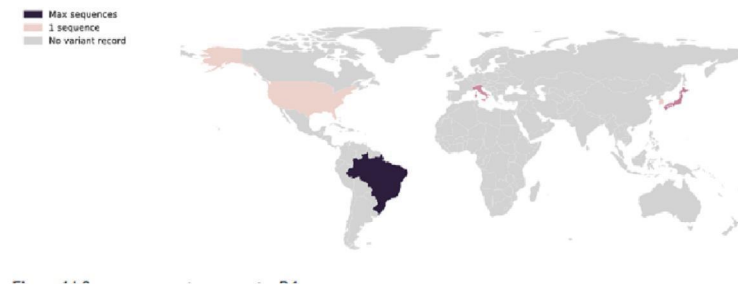


[https://cov-lineages.org/global\\_report\\_B.1.351.html](https://cov-lineages.org/global_report_B.1.351.html)

# P1 of B 1.1.28 of GR/484K.V2 of 20J/501YV3 (Brazilie variant)

Figure 3 | Map of P.1 sequence counts

Map showing the logged number of sequences of the variant in each country. Countries with more sequences are shown in darker colours.



Country Submission Count

| Country        | Total #GR/484K.V2 (B.1.1.28) | #GR/484K.V2 (B.1.1.28) in past 4 weeks | %GR/484K.V2 (B.1.1.28) in past 4 weeks |
|----------------|------------------------------|--|--|
| Brazil         | 175                          | 19                                     | 50.4                                   |
| USA            | 24                           | 13                                     | 0.2                                    |
| United Kingdom | 15                           | 3                                      | 0.0                                    |
| Canada         | 13                           | 0                                      | 0.0                                    |
| Japan          | 9                            | 0                                      | 0.0                                    |
| Denmark        | 6                            | 2                                      | 0.1                                    |
| Italy          | 5                            | 3                                      | 7.3                                    |
| Argentina      | 5                            | 0                                      | 0.0                                    |
| Ireland        | 4                            | 3                                      | 0.9                                    |
| Norway         | 3                            | 0                                      | 0.0                                    |

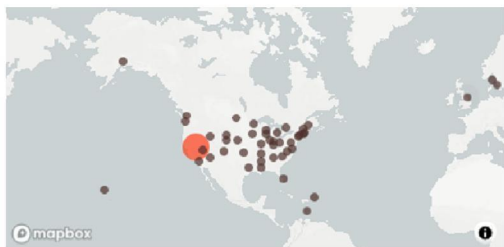
## P2 of B 1.1.28 of 20B/S.484K (Brazilie variant)



ErasmusMC: 1x gedetecteerd, reiziger Brazilië,  
Woonplaats Den Helder

[https://nextstrain.org/groups/neherlab/ncov/S.E484?c=region&f\\_clade\\_membership=20J/501Y.V3&label=clade:20B/S.484K&p=grid&r=country](https://nextstrain.org/groups/neherlab/ncov/S.E484?c=region&f_clade_membership=20J/501Y.V3&label=clade:20B/S.484K&p=grid&r=country)

## S.L452R (California variant)



L452R geeft mogelijk ook verminderde neutralisatie  
(Liu et al., bioRxiv)

Aantal andere “varianten” in de US

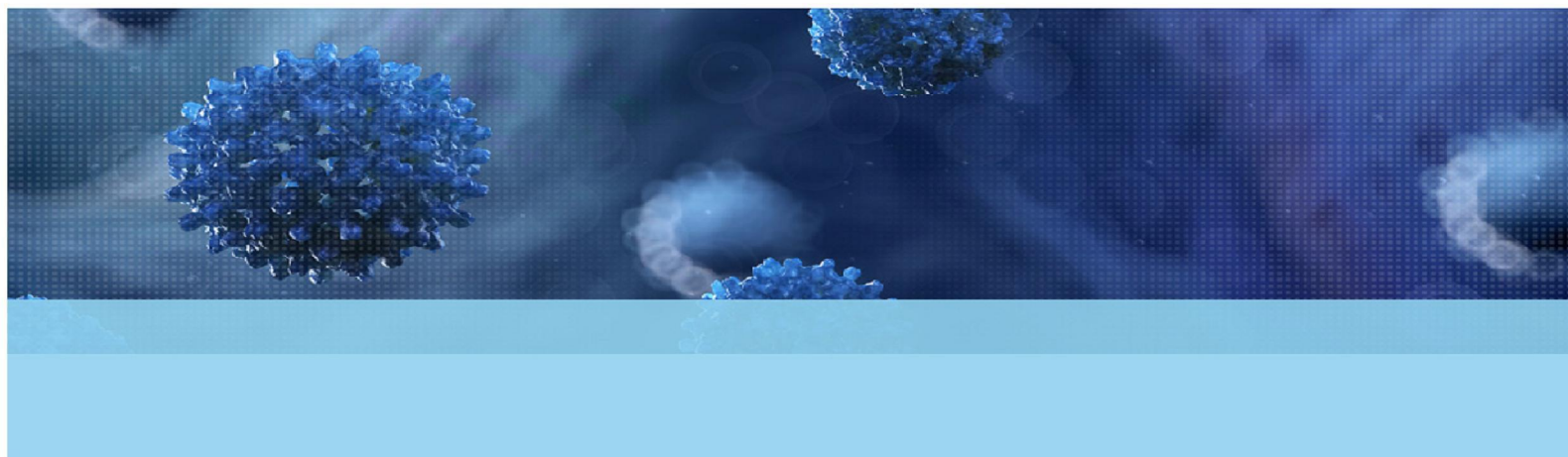
Country Submission Count

| Country           | Total<br>#GH/452R.V1<br>(B.1.429) | #GH/452R.V1<br>(B.1.429) in<br>past 4 weeks | %GH/452R.V1<br>(B.1.429) in<br>past 4 weeks |
|-------------------|-----------------------------------|---|---|
| USA               | 1,132                             | 412   | 7.1   |
| Japan             | 13                                | 0   | 0.0   |
| Australia         | 12                                | 5   | 5.2   |
| United<br>Kingdom | 4                                 | 2   | 0.0   |
| Mexico            | 4                                 | 0   | 0.0   |
| Denmark           | 3                                 | 0   | 0.0   |
| Aruba             | 2                                 | 2   | 25.0  |
| Taiwan            | 1                                 | 0   | 0.0   |
| Singapore         | 1                                 | 0   | 0.0   |
| New<br>Zealand    | 1                                 | 0   | 0.0   |



**GGD**  
Rotterdam-Rijnmond

**Viroscience lab**  
WHERE SKILLS MEET TO STUDY & PROTECT



## Wat is het huidige aantal besmettingen in Lansingerland?

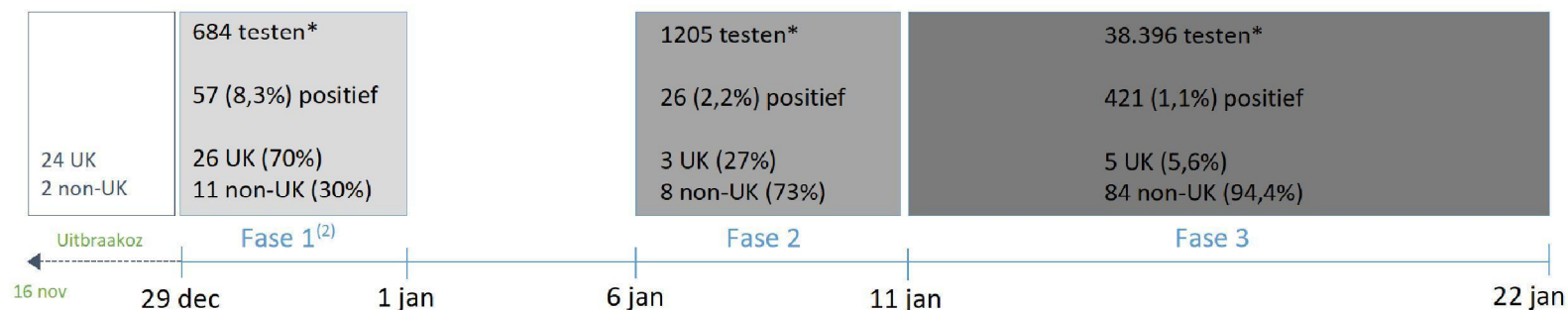


40.114 unieke personen getest. Dit is 63% van alle inwoners.

500 (1,2%) positief voor COVID-19

34 UK (25%) & 100 non-UK (75%)<sup>(1)</sup>

<sup>(1)</sup> Gevonden UK en reguliere stammen komen met name uit de 1<sup>e</sup> fase. Sequencing is verricht op 278 samples, waarbij voor de helft sequencing niet gelukt is. Ruim 200 samples zijn niet gesequenced omdat ze later binnen zijn gekomen.



\*Testen waarvan een testuitslag bekend is. Het komt voor dat mensen zich in meerdere fases hebben getest.

<sup>(2)</sup> Bij fase 1 Willibrord is tevens uitgebreid uitbraakonderzoek gedaan. De mensen die voor de startdatum van testen reeds bekend waren zijn hier niet meegenomen, deze staan in het blok ervoor. Totaalinformatie Willibrord staat op slide 16.

## Aantal bij de GGD gemelde COVID-19 patiënten 1 juli 2020 t/m 27 januari 2021

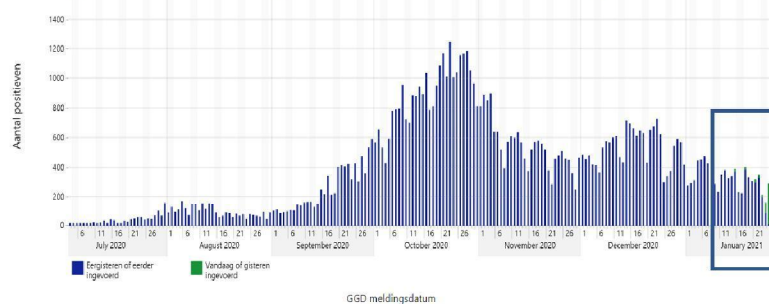
## Signaal rioolwater onderzoek



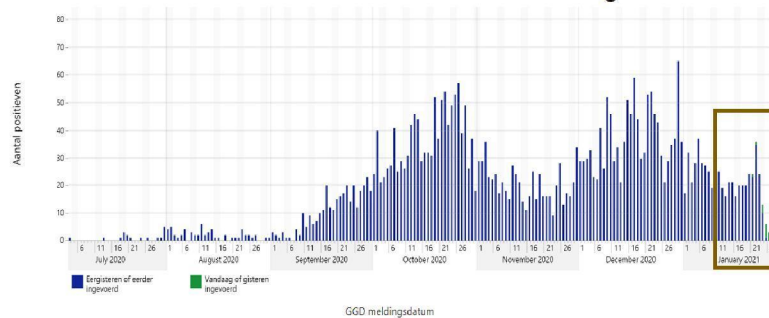
KWR



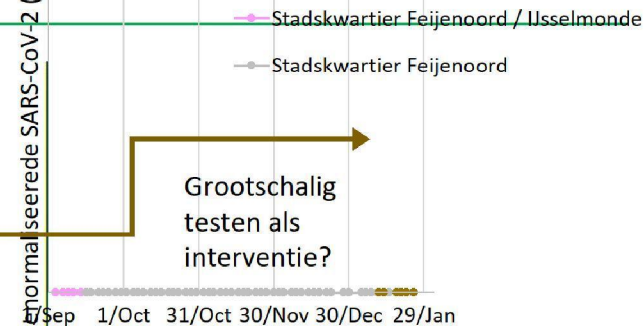
### Regio Rotterdam-Rijnmond EXCLUSIEF Lansingerland



### Gemeente Lansingerland



Genormaliseerde SARS-CoV-2 (#ml huishoudelijk afvalwater)



## Ongoing

- Analyse en overzicht Thermofisher S dropout data
- Overzicht alle uitbraakclusters gesequencet
- 20H/501Y.V2( ZA variant) Gorinchem
- PRNTs UK, ZA, nertsenvarianten (NL en Litouwen)